



FOR LEASE: Rocky Mountain Professional Centre

1205 Bow Valley Trail, Canmore, Alberta

- **Zoning District; BVT central district Easy access**
- **Elevator to second floor**
- **Common area washrooms**
- **Newly renovated building**
- **Ample on-site parking**
- **Adjacent Hospital**
- **Ideal for medical and professional offices**

Sizes in sq. ft. 6,328 SF, more or less (BOMA Leasable Areas)

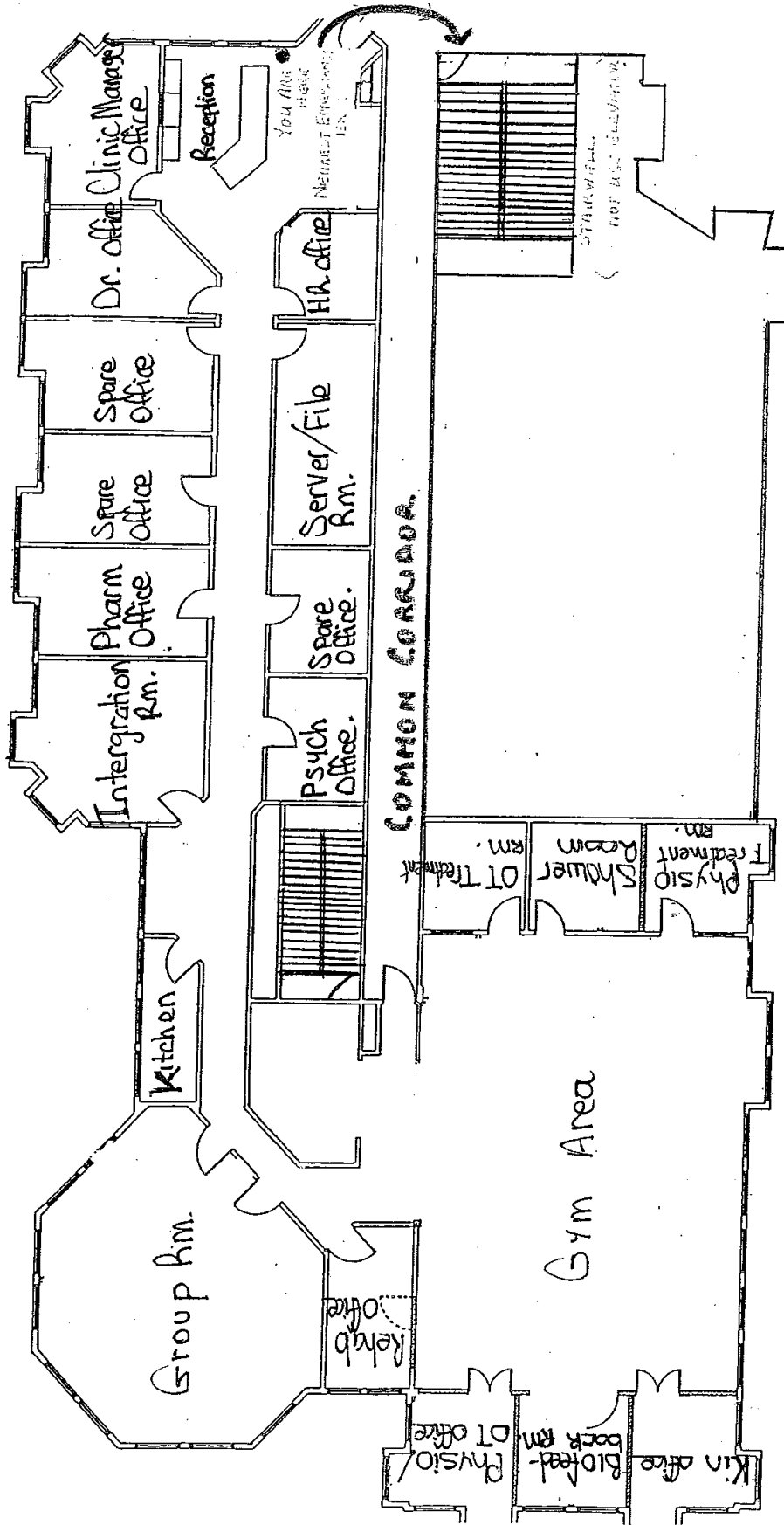
Potential for up to approximately 6800 sf contiguous space

Basic Rent; asking \$19/sf

Operating costs for 2016 estimated at \$10.00/sf including all utilities

- ***E& O E; this material is based on information provided by the Landlord***
 - ***For further details, please call 403-678-5744***

Orion Health
EVACUATION MAP - Can more Clinic



- E& O E; this material is based on information provided by the Landlord
 - For further details, please call 403-678-5744

- *E& O E; this material is based on information provided by the Landlord*
 - *For further details, please call 403-678-5744*